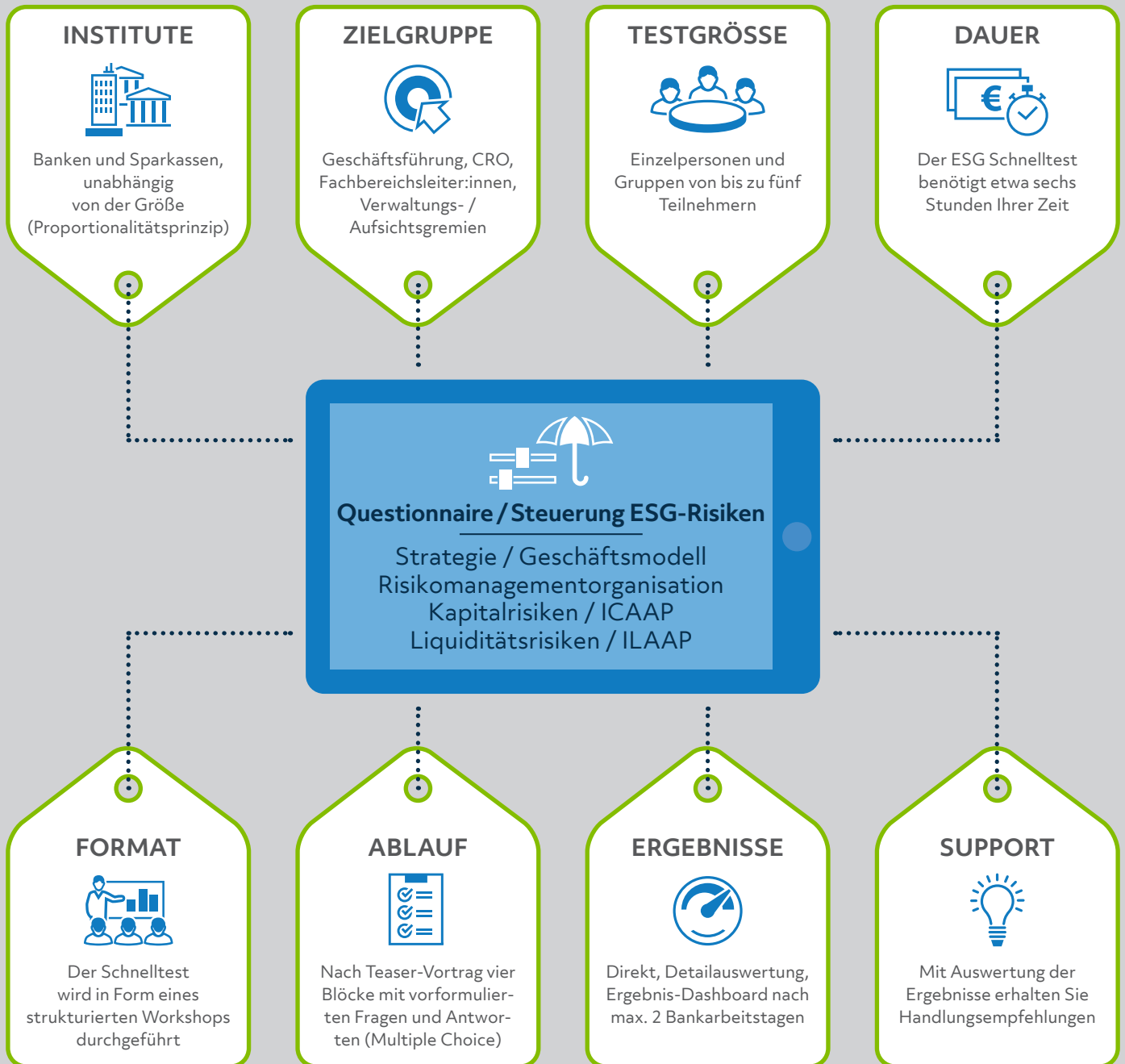


# ESG Readiness-Check

Fit & proper, SREP-konform. Risikomanagementorganisation



## Kontakt, Buchungsanfragen und Informationen:



**Stefan Hoppe**  
T +49 (0)176 4300 0574  
stefan.hoppe@ppi.de

**PPI AG**  
Moorfuhrweg 13  
22301 Hamburg  
Germany